

The Trumpet-Major

Thomas Hardy



MACMILLAN READERS

MACMILLAN READERS
BEGINNER LEVEL

THOMAS HARDY

The Trumpet-Major

Retold by John Escott



MACMILLAN

Founding Editor: John Milne

The Macmillan Readers provide a choice of enjoyable reading materials for learners of English. The series is published at six levels – Starter, Beginner, Elementary, Pre-intermediate, Intermediate and Upper.

Level control

Information, structure and vocabulary are controlled to suit the students' ability at each level.

The number of words at each level:

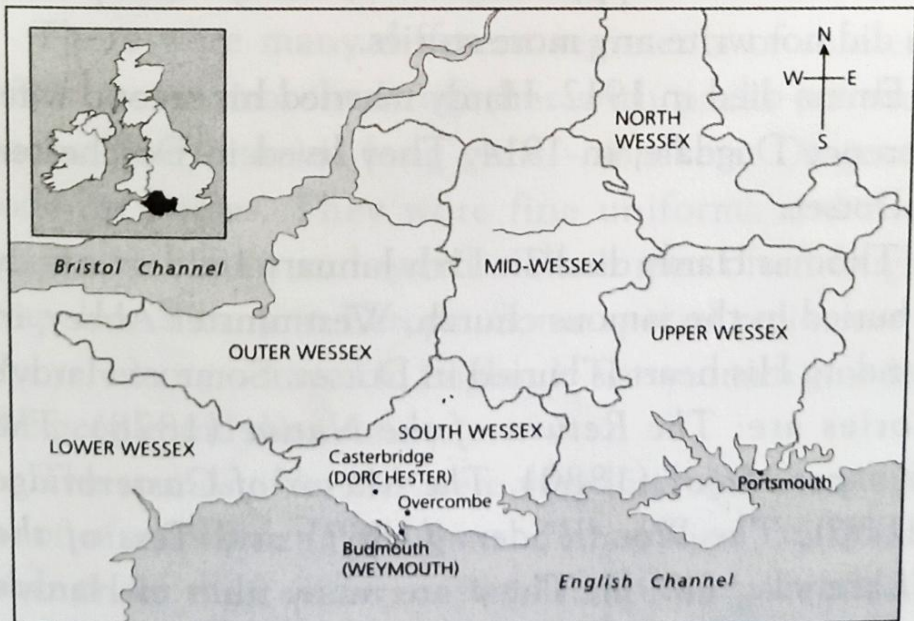
Starter	about 300 basic words
Beginner	about 600 basic words
Elementary	about 1100 basic words
Pre-intermediate	about 1400 basic words
Intermediate	about 1600 basic words
Upper	about 2200 basic words

Vocabulary

Some difficult words and phrases in this book are important for understanding the story. Some of these words are explained in the story and some are shown in the pictures. From Pre-intermediate level upwards, words are marked with a number like this: ...³. These words are explained in the Glossary at the end of the book.

Contents

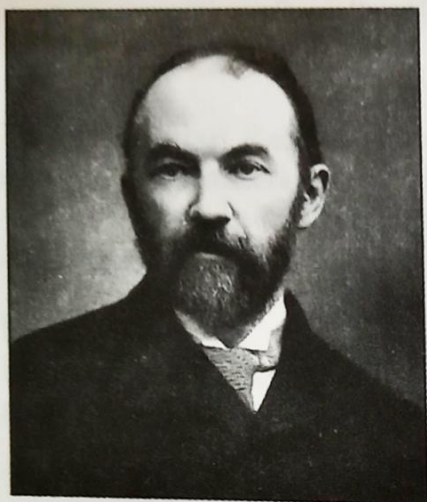
<i>A Note About the Author</i>	4
<i>A Note About This Story</i>	5
<i>The People in This Story</i>	6
1 Overcombe Mill	7
2 The Trumpet-Major	10
3 Oxwell Hall	15
4 The Young Sailor	20
5 Matilda Johnson	25
6 'I'm Going to Marry You!'	31
7 The Woman in the Green Coat	35
8 The Press-gang	40
9 The Victory	45
10 News From Robert	52
11 'John Is a Good Man'	57
12 'Goodbye, My Dear'	60



Lower Wessex = Devon
North Wessex = Berkshire
South Wessex = Dorset

Mid-Wessex = Wiltshire
Outer Wessex = Somerset
Upper Wessex = Hampshire

A Note About the Author



Thomas Hardy was a poet and novelist. He was born on 2nd June 1840. His family lived in Dorset, a county in the south of England. Hardy's father was a stone-mason. He cut stone for houses and churches.

In 1862, Hardy became an architect. He designed buildings. He married Emma Gifford in 1874. They lived in Dorset. Later, they lived in London. At first, they were very happy and Hardy began to write novels. But after 1890, Thomas and Emma were not happy. From 1898, Hardy wrote poetry. He did not write any more stories.

Emma died in 1912. Hardy married his second wife, Florence Dugdale, in 1914. They lived in Dorchester, in Dorset.

Thomas Hardy died on 11th January 1928. His body is buried in the famous church, Westminster Abbey, in London. His heart is buried in Dorset. Some of Hardy's stories are: *The Return of the Native* (1878), *The Trumpet-Major* (1880), *The Mayor of Casterbridge* (1886), *The Woodlanders* (1887) and *Tess of the d'Urbervilles* (1891). There are many films of Hardy's stories.

A Note About This Story

Time: 1804 to 1807. **Place:** The south of England.

Thomas Hardy's stories are about the people of the counties of Berkshire, Hampshire, Wiltshire, Dorset, Somerset and Devon. Hardy called the area Wessex – an old English name. He also gave new names to some of the towns and villages. (See the map on page 3.)

In the 1800s, Britain was at war with France. King George III was the ruler of Great Britain. Napoleon was the ruler of France from 1804 to 1815. The people of England were frightened. Did Napoleon want his army to come across the Channel? In 1803 and 1804, many regiments of British soldiers went to the south of England. They made camps on the hills along the coast. They were ready to fight battles.

There were many different regiments of soldiers. Infantrymen marched together with packs on their backs. They carried long guns – muskets. Dragoons rode on horses. They wore fine uniforms and they fought with guns and swords. These men often fought Napoleon's army in Europe. Some special regiments – the yeomanry – stayed in England. The yeomen guarded the people and the country.

The sounds of battles were very loud and there was a lot of smoke from the guns. The soldiers could not hear or see their officers easily. Trumpeters gave orders to the soldiers. Each trumpet tune was a different order. Trumpet-majors were in charge of the trumpeters.

Published by Macmillan Heinemann ELT
Between Towns Road, Oxford OX4 3PP
Macmillan Heinemann ELT is an imprint of
Macmillan Publishers Limited
Companies and representatives throughout the world
Heinemann is a registered trademark of Harcourt Education, used under licence.

ISBN 1-405072-53-9
EAN 978-1-405072-53-3

This retold version by John Escott for Macmillan Readers
First published 1999
Text © John Escott 1999, 2002, 2005
Design and illustration © Macmillan Publishers Limited 1999, 2002, 2005

This edition first published 2005

All rights reserved; no part of this publication may be reproduced,
stored in a retrieval system, transmitted in any form, or by any means,
electronic, mechanical, photocopying, recording, or otherwise, without
the prior written permission of the publishers.

Illustrated by Gerry Bell
Map on page 3 by Peter Harper
Original cover template design by Jackie Hill
Cover illustration by Rod Vass
Acknowledgements: The publishers would like to thank Mary Evans
Picture Library for permission to reproduce the picture on page 4.

Printed in Thailand

2009 2008 2007 2006 2005
10 9 8 7 6 5 4 3 2 1